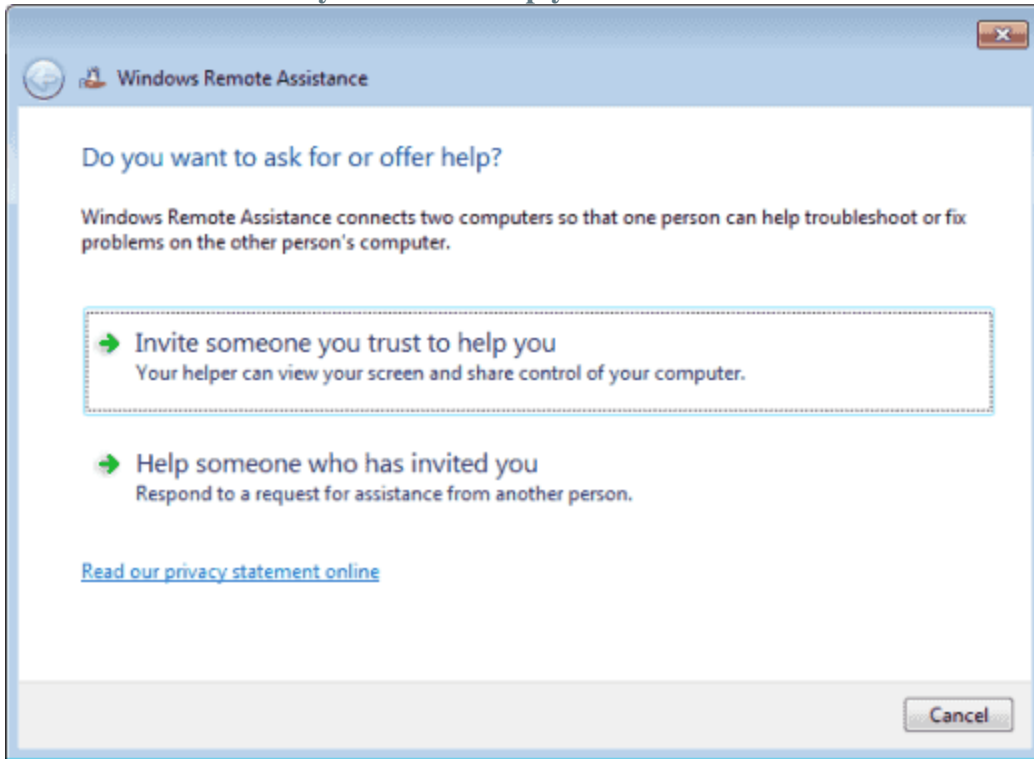


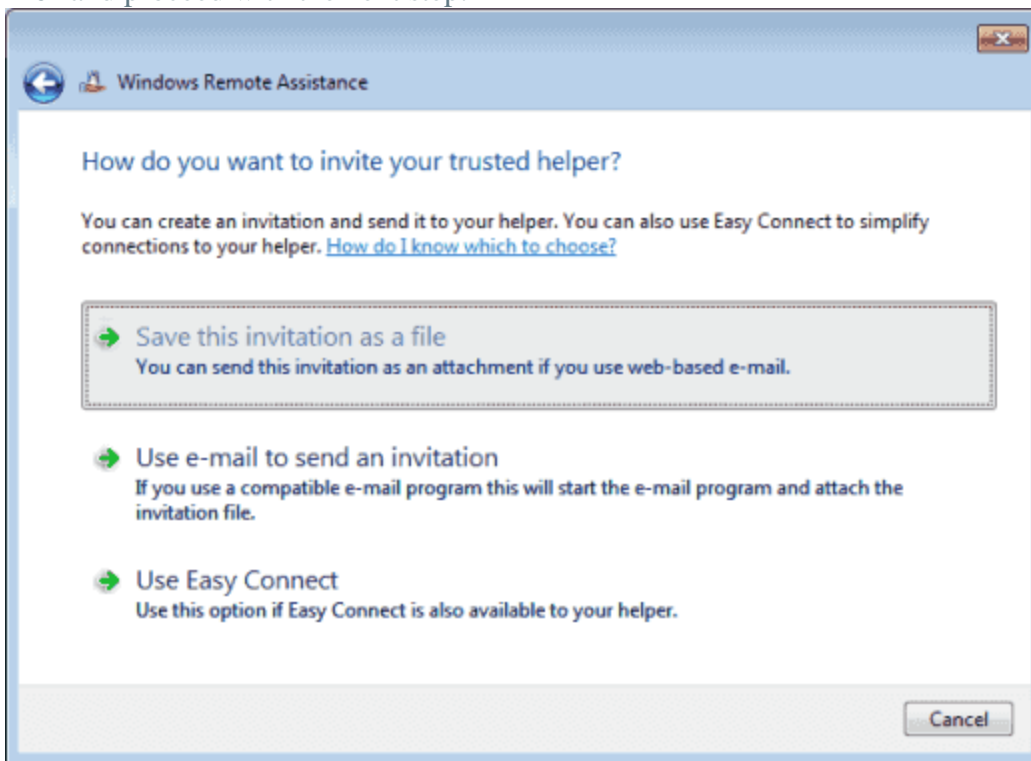
Send Invite to Control Computer

1. Hold the **Windows Key**, then press “**R**” to bring up the **Run** box.
2. Type “**msra**“, then press “**Enter**“
3. Select “**Invite someone you trust to help you**“.

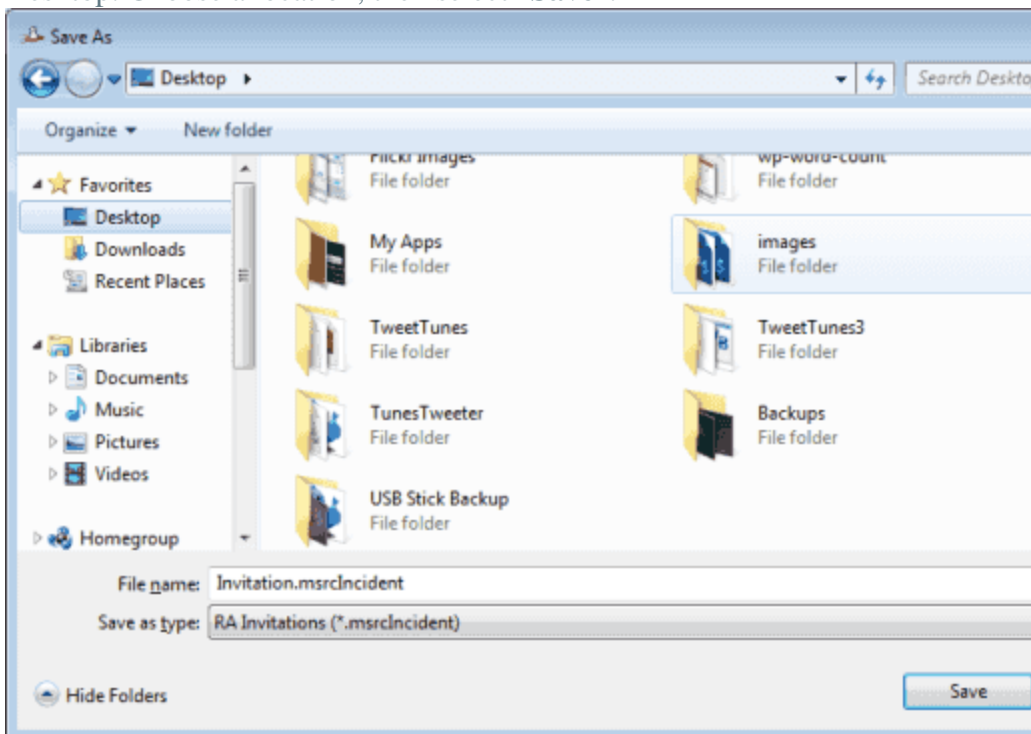


4. You may be able to select “**Use e-mail to send an invitation**” if your default email client is setup properly. This option will automatically start an email message and add the attachment you need. All you’ll have to do is type in the email address to the person you’re sending it to and send it. In most cases, you’ll have to choose “**Save this invitation as a**

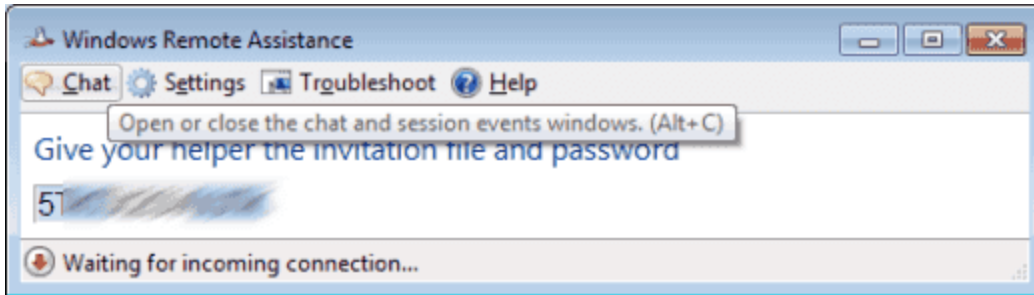
file” and proceed with the next step.



5. Choose a place to save the invitation file. I like to place it where I can find it on my Desktop. Choose a location, then select “Save”.



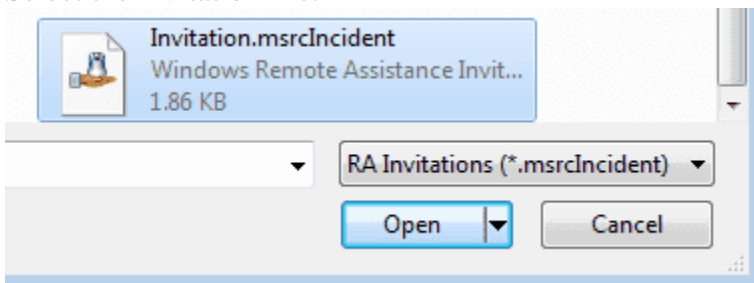
6. A window will open with a password. Keep this window open, otherwise the session will end.



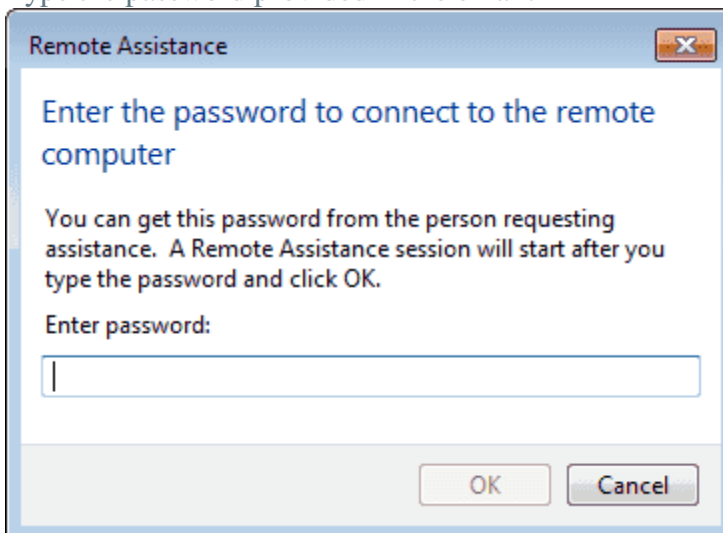
7. Compose a new email message using whatever email service you use. Provide the password you were provided and attach the invitation file to the message. Send it off to the person you want to connect to your computer.

Connect to a Computer After Receiving Invitation

1. Hold the **Windows Key**, then press “**R**” to bring up the **Run** box.
2. Type “**msra**“, then press “**Enter**“.
3. Select “**Help someone who has invited you**“.
4. Select “**Use an invitation file**“.
5. Select the invitation file.



6. Type the password provided in the email.



7. Select “**OK**” and you are connected and can control the desktop using Remote Assistance.

